

# EDGE IDE

The fundamental needs of any software developer are a way to create your code, and a way to build that. But with today's schedules, it's not enough to have a text editor and compiler.

The EDGE IDE manages the projects that you build, and lets you move, edit and compile the pieces that make up your workday. As an Eclipse framework plugin, the IDE is easy to use and familiar.

## Advanced Features

The built-in editor has the features that you need.

### Syntax highlighting

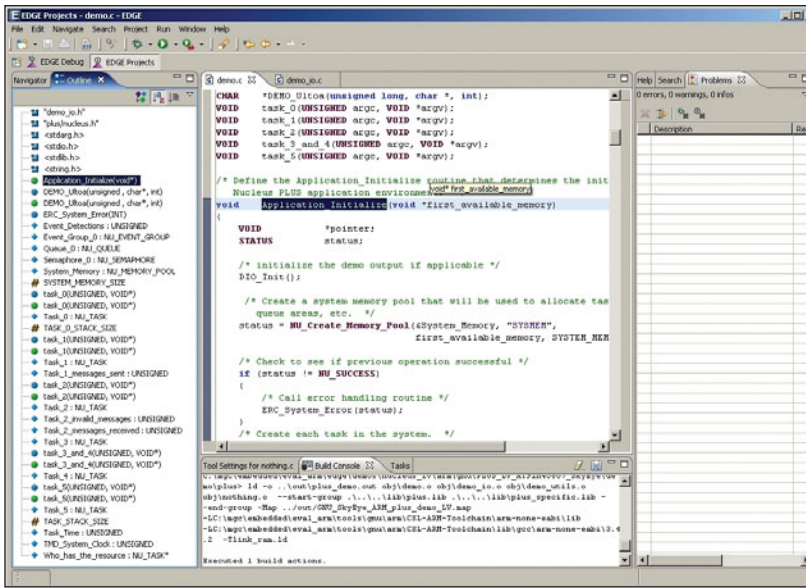
By color-coding comments and keywords, source code is much easier to read and understand.

### Local history

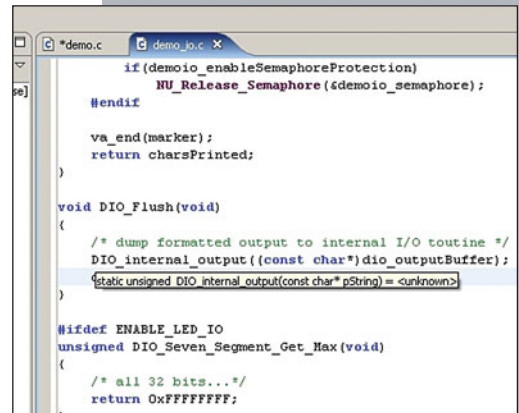
Need to go back to an earlier version of your code? Local history lets you see what changes have been made, and to select which version you want to work with.

### Source browsing

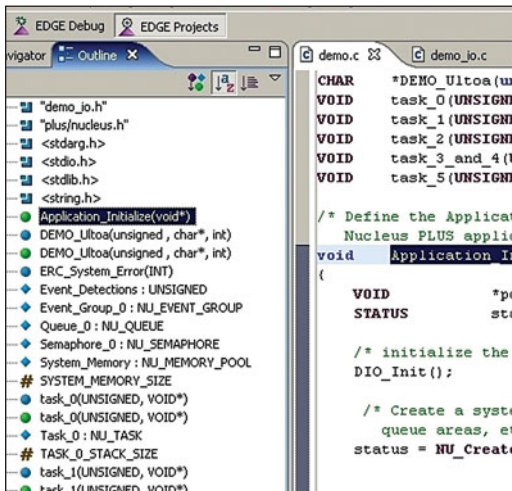
Need to find a function or other symbol in your code, but not sure which file it's in? Source browsing makes it easy. Listings of variables, functions, and source language items can be sorted alphabetically, based on type or line number in the file.



EDGE IDE outline view shows contents of the current file, and the floating tool tips show function prototypes



EDGE IDE floating tool tip shows function information



An alphabetized list of elements in the active file is shown in the outline view

### Context-sensitive tool tips

Can't remember how you defined a variable or function? Hover over it to see the definition in a tool tip.



739 North University Blvd • Mobile, Alabama 36608  
Phone: 251.208.3400 • Fax: 251.343.7074 • Toll free: 800.468.6853

embedded\_info@mentor.com • www.mentor.com/embedded